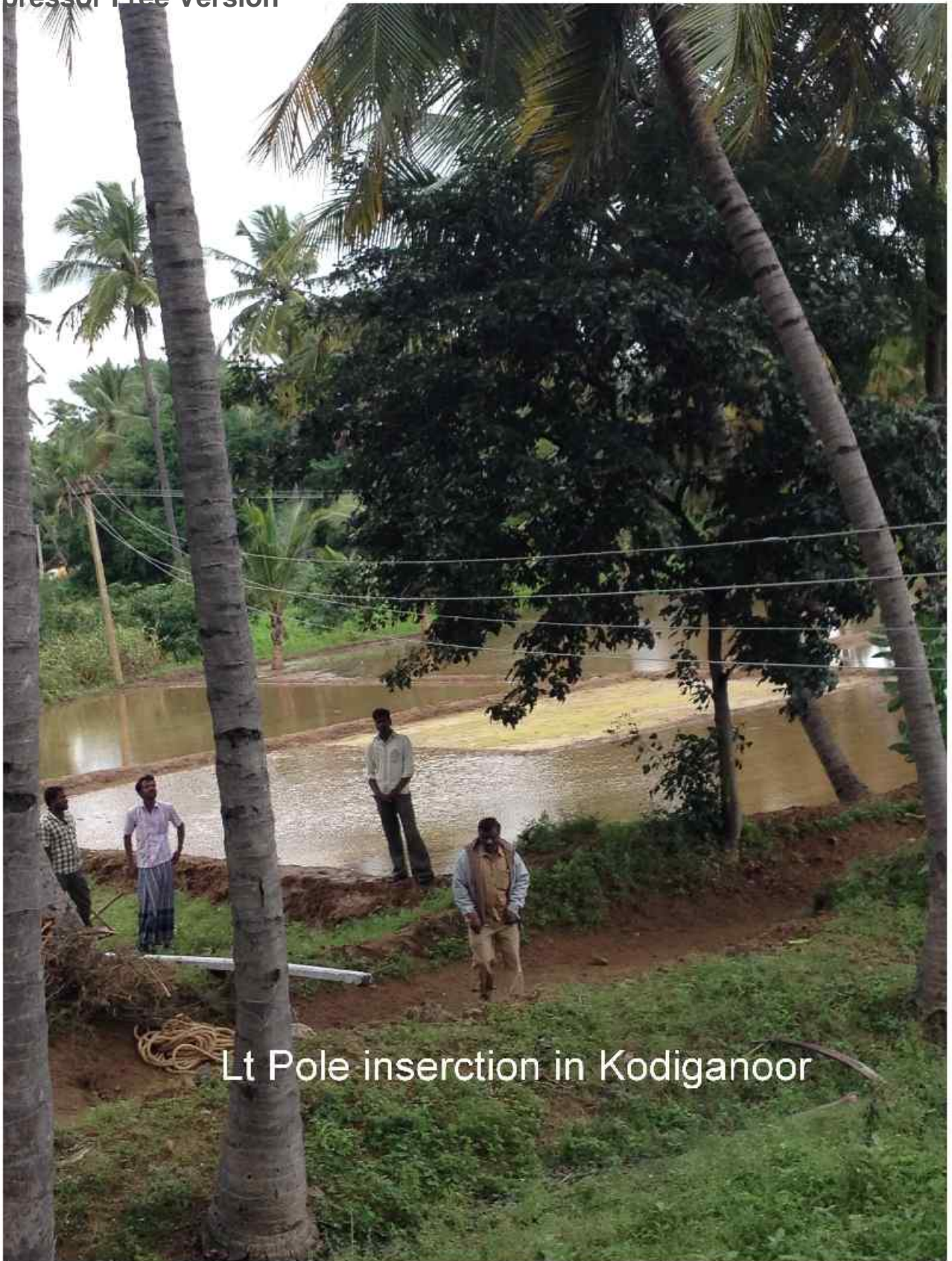


**PRECAUTIONARY MEASURES TAKEN UPCOMING NORTH EAST MONSOON**

<b>A.Replacement of damaged poles</b>			
S.No	Name of the circle	No damaged poles replaced	Remarks
1	Dharmapuri	319Nos	To avoid accidents, damaged poles are replaced during past three month.
<b>B.Replacement of Deterioted / Aged conductors</b>			
S.No	Name of the Circle	Replacement of Deterioted / Aged conductors	Remarks
1	Dharmapuri	10.07Kms	To avoid accidents, aged conductors are replaced during past three month.
<b>C.Rectification of low sagging lines</b>			
S.No	Name of the Circle	Rectification of low sagging lines	Remarks
1	Dharmapuri	21.57Kms	To avoid accidents, low clearance/ low sag lines are restringed during past three month.

Additional Chief Engineer,  
DEDC/Dharmapuri.



Lt Pole inserction in Kodiganoor



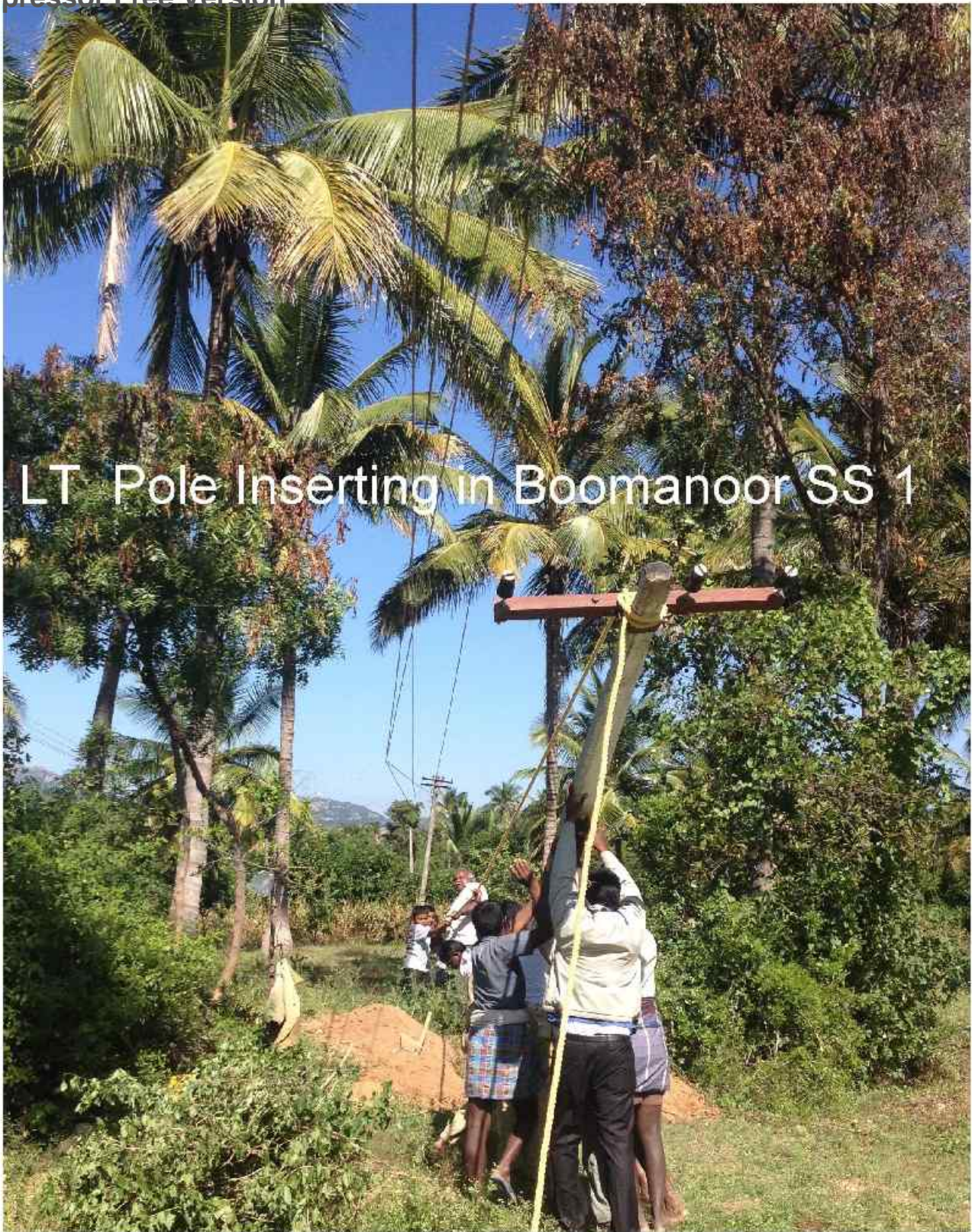
LT Damage pole replacement in Jittandahalli SS4



LT Pole nserction in Boomanoor SS4



LT pole insertion in Puram SS1



LT Pole Inserting in Boomanoor SS 1



Demage pole Replacement in Jittandahali SS5



Damaged pole replacement at GC patty.



Pole Insertion in  
Centrenahelly



photo insertion in Mukkulam



Resag In Etttyanoor

